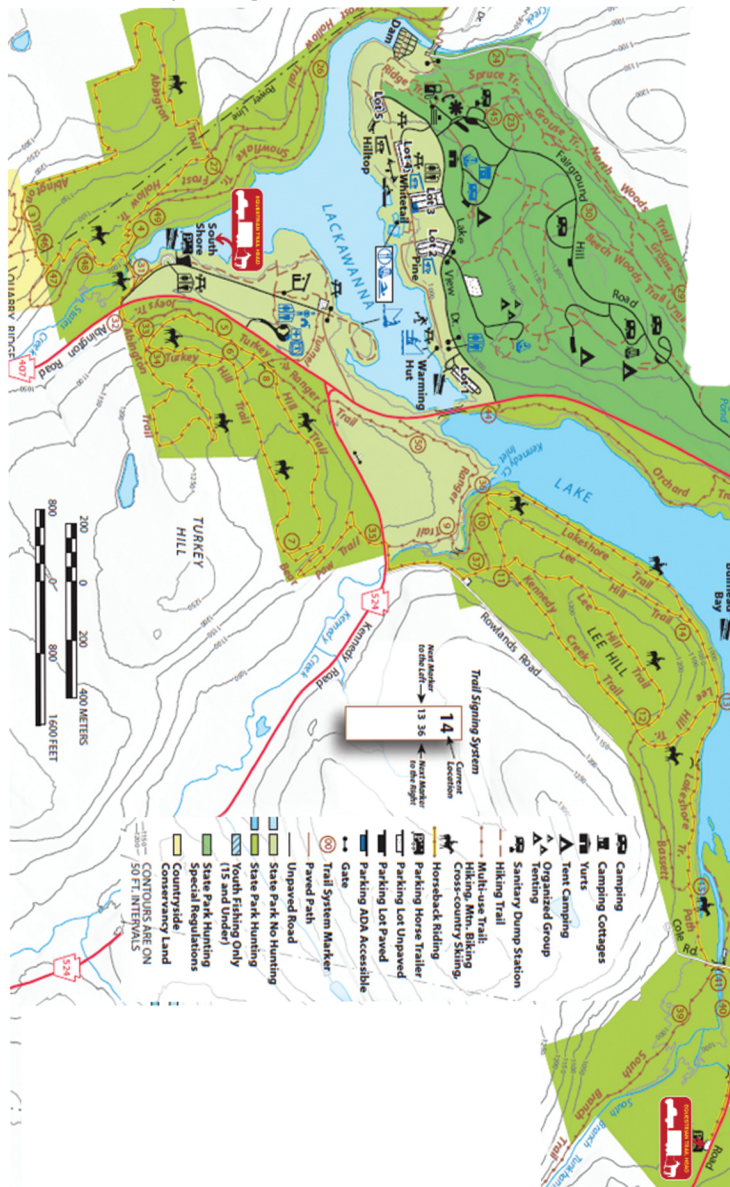


LACKAWANNA STATE PARK

PAGE 2-3

Map Update: A new map has been released and is available to download/print when you subscribe to Trail Rider's Path. Horse trails are highlighted in yellow. Horseback riding is permitted on Frost Hollow Trail and Kennedy Creek Trail. This is the only change to the map.



This insert is a supplement to the Trail Rider's Path: PA Eastern Edition. Information up to date as of February 2023 and is subject to change. Trail Rider's Path is not responsible for topographical errors.

JACOBBSBURG STATE PARK

PAGE 8-9

Map Update: A new map has been released. Trails remain the same. Gates are now numbered throughout the park for better navigation. When entering & leaving the equestrian lot, be sure to **close the gates**.

RICKETTS GLEN STATE PARK

PAGE 4-5

Horse trailers are not permitted in the Beach Lot #2. You must park in the dirt lot next to it.

PROMISED LAND TRAIL SYSTEM

DELAWARE STATE FOREST

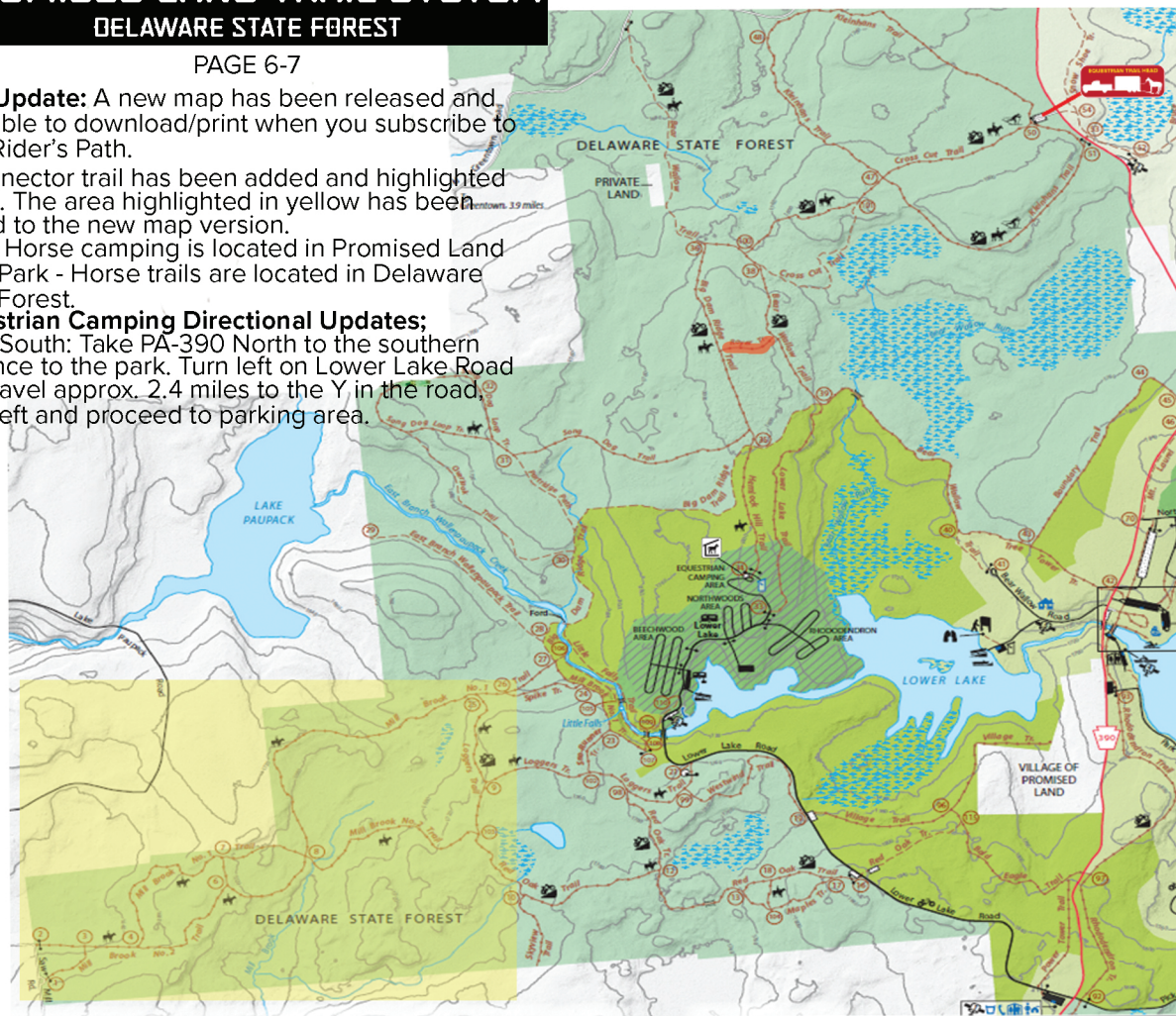
PAGE 6-7

Map Update: A new map has been released and available to download/print when you subscribe to Trail Rider's Path.

A connector trail has been added and highlighted in red. The area highlighted in yellow has been added to the new map version.

Note: Horse camping is located in Promised Land State Park - Horse trails are located in Delaware State Forest.

Equestrian Camping Directional Updates:
From South: Take PA-390 North to the southern entrance to the park. Turn left on Lower Lake Road and travel approx. 2.4 miles to the Y in the road, bear left and proceed to parking area.



Effective November 3, 2022 - Reservations for campsites in PA State Forests must be made online through the PA State Park & State Forest Reservation System. <https://pennsylvaniastateparks.reserveamerica.com/welcome.do>; or call ReserveAmerica Call Center at 888-727-2757; or by using the ReserveAmerica Camping App. \$10 per night for PA Residents and \$15 for non-residents. Plus \$6.50 transaction fee to cover operating costs.



Subscribe to Trail Rider's Path to download and/or print maps included in this guide.

You will also have access to every map for all trail locations listed on our website.

CODORUS STATE PARK

PAGE 16-17

Map Update: A new map has been released, there is one small change for the horse trails. The trail highlighted in red is no longer available.

MARSH CREEK
STATE PARK

Trail Map Update: A new map has been released, There is one addition to the map. The Lime Loop has been added and is highlighted in red.



VALLEY FORGE HISTORICAL PARK

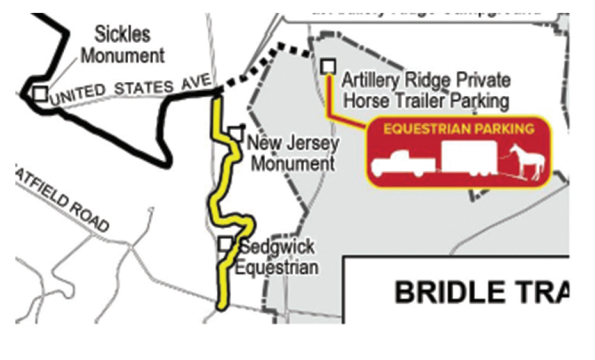
PAGE 28-29

Trail Map Update: The blue trail below is now labelled as Grand Parade Trail. The trails highlighted in yellow have been added and are available for equestrian use. It is a quiet mown trail through the meadow.



GETTYSBURG NATIONAL PARK

Trail Map Update: The trail highlighted in yellow below that passes the New Jersey Monument and Sedgwick Equestrian are now **pedestrian only**.



SWATARA STATE PARK

Mounting blocks have been added on either side of the Sand Siding Bridge, to assist riders with dismounting & mounting before crossing the bridge.

BLUE MARSH LAKE

Map Update: A new map has been released (below) and is available to download/print when you subscribe to Trail Rider's Path.

