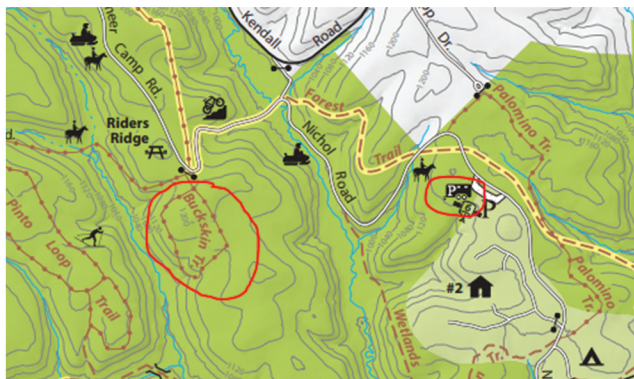


RACCOON CREEK STATE PARK

PAGE 10-11

Directions Update: PA-60 is now Interstate 376.

Map Update: There is a 2nd parking lot for horse trailers located off of Nichol Road near Palomino Trail. The Buckskin Trail has been re-routed. See screenshot below:



NOTE: Palomino Ranch is closed (ad on page 14).

MICHAUX STATE FOREST

PAGE 18-19

Trail Updates: The Flat Rock Trail System now has 4x4 posts at trail intersections.

PAGE 20-21

Trail Updates: The Shared-Use Trail System Teaberry Rd. is closed to motor vehicle traffic and is now gated at each end. Improvements have been made to the Teaberry parking area and adjoining trail. The numbered intersection signage is no longer being maintained as DCNR transitions trail intersections to routed 4x4 posts with trail names.

Horse Camping Updates:

Motorized camping with horses is only permitted at the following designated sites: Piney Mountain, Big Flat, Peggy's Hill, Teaberry and Swift Run. Camping permit is required.

Mt. Hope Trail System in Michaux State Forest

10 miles of shared-use trails available. Parking is located off of Mt. Hope Road and is day-use only. New map is available to download and/or print when you subscribe to Trail Rider's Path.

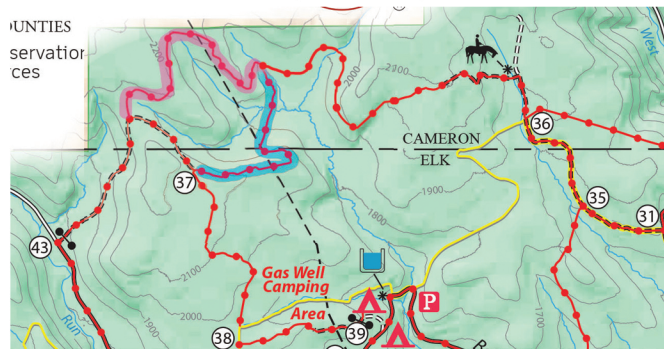
This insert is a supplement to the Trail Rider's Path: Original Edition. Information up to date as of February 2023 and is subject to change. Trail Rider's Path is not responsible for typographical errors.

THUNDER MTN EQUESTRIAN TRAIL

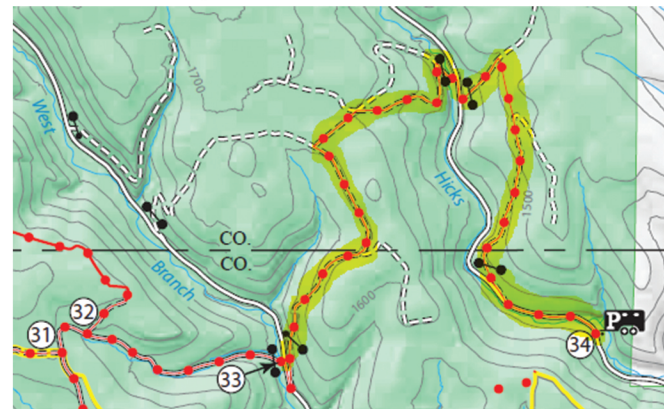
PAGE 12-13

Trail Updates: The trail between #46 and #47 is now open.

Map Updates: #37 - a new section of trail which is highlighted in purple and a section of trail highlighted in blue has been removed (see below):



The trail segment between trail #33 and #34 has a new route (see below).



Effective November 3, 2022 - Reservations for campsites in PA State Forests must be made online through the PA State Park & State Forest Reservation System. <https://pennsylvaniastateparks.reserveamerica.com/welcome.do>; or call ReserveAmerica Call Center at 888-727-2757; or by using the ReserveAmerica Camping App. \$10 per night for PA Residents and \$15 for non-residents. Plus \$6.50 transaction fee to cover operating costs.



Subscribe to Trail Rider's Path to download and/or print maps included in this guide.

You will also have access to every map for all trail locations listed on our website.

BLUE KNOB STATE PARK

PAGE 16-17

Parking Updates: A 2nd parking area is located at the Willow Springs Picnic Area.

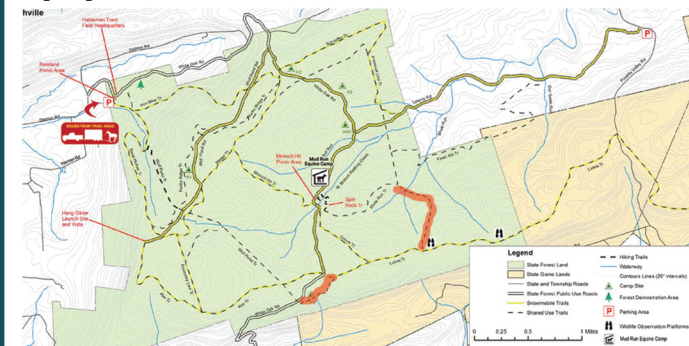
Trail Updates: New 'horse symbols' signs are installed to make it easier to know the trails that are open to horseback riding.

Horses are permitted on Three Springs Trail, Sawmill Trail, Homestead Trail and portions of Chappells Field Trail.

WEISER STATE FOREST

PAGE 22-23

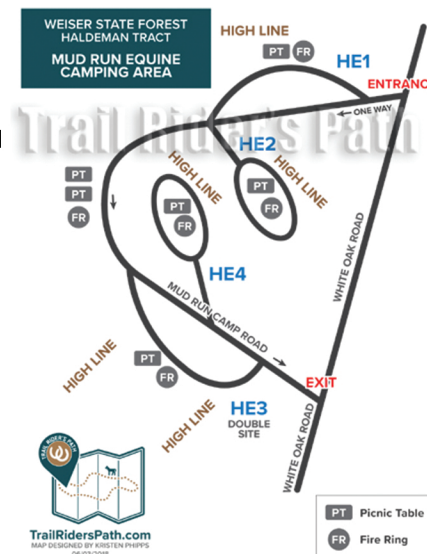
Trail Updates: An extension was added to Wolf Pond Trail where it touches White Oak Road on the southern end of the tract. A connector trail has been added from Shale Run Trail to Lukes Trail. Both connector trails are blazed. Highlighted in red below:



Horse Camping:

There are 4 primitive campsites for horses. All sites include high lines, picnic table and and fire ring. HE3 is a double site and includes 2 sets of high lines.

Camping is no longer permitted at the Rowland Lot, this parking area is for day-use only.



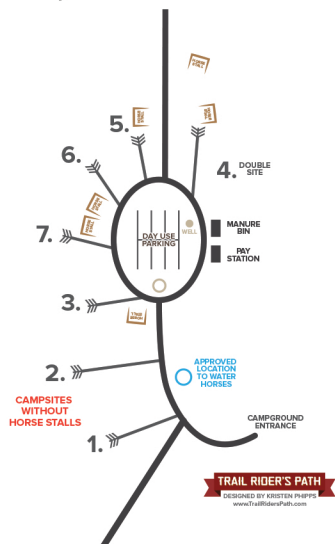
ALLEGHENY NATIONAL FOREST SPRING CREEK HORSE TRAIL SYSTEM

PAGE 2-3

Kelly Pines Horse Camping

Reservations can be made online at www.recreation.gov or by phone (877) 444-6777. Cost is \$15 per rig/night, \$25/night for a double site. There are five horse sites. Each site has one tie stall that accommodates four horses. The campground can hold up to 24 horses in tie stalls. Horses must use the tie stalls to protect the wetlands around the campground. No high lines, portable corrals, etc. Vault toilet, manure bin, non-potable water source for the horses, picnic tables and fire rings available. Dispersed camping is available throughout the trail system along Forest Service roads. Follow National Forest camping dispersed camping guidelines, do not block roads or gates and vehicles must stay within 50 feet of any road.

Several other group areas located on the trail system are also available. One is located on Forest Road 403 in a large reclaimed gravel pit and another is located in the Corduroy area on Forest Road 125.



GREEN LANE PARK

PAGE 30-31

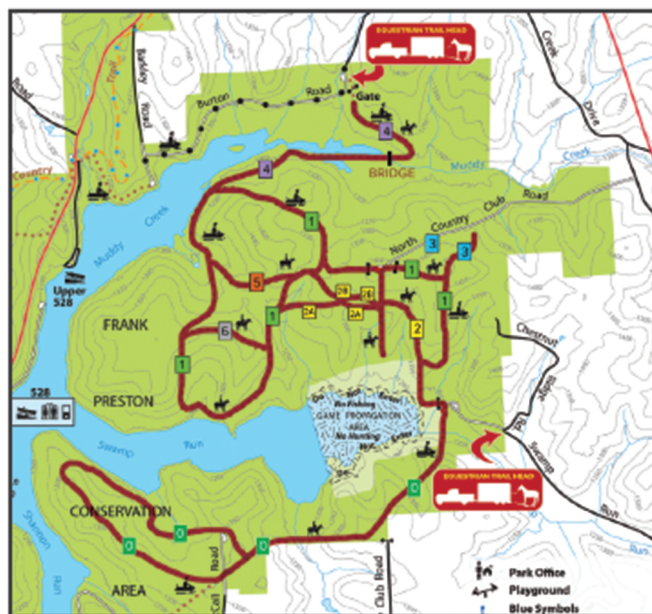
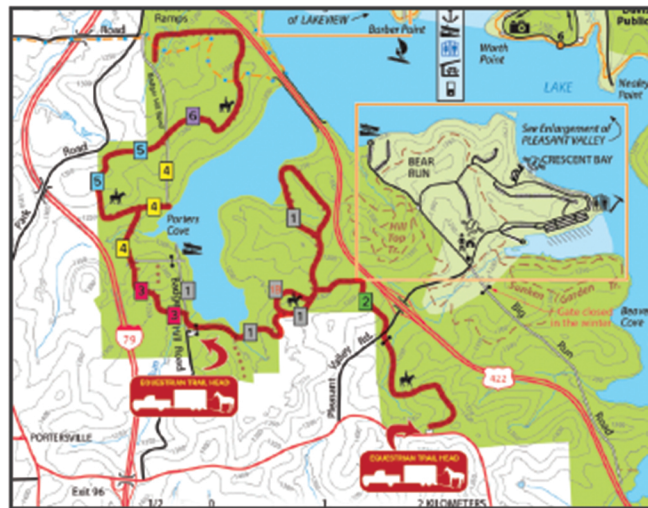
Campground Updates: The equestrian campground now has electric (2) 110 amp outlets at each stall.

MORaine STATE PARK

PAGE 6-7

Trail Updates: There are 25 miles of equestrian trails and they are now blazed in red.

Thank you to a local equestrian group, National Horse Lovers Association, who has created a numbering system for the two equestrian trail areas. Trails are numbered via carsonite posts at trailheads and intersections for wayfinding purposes. Please support www.nationalhorselovers.com.

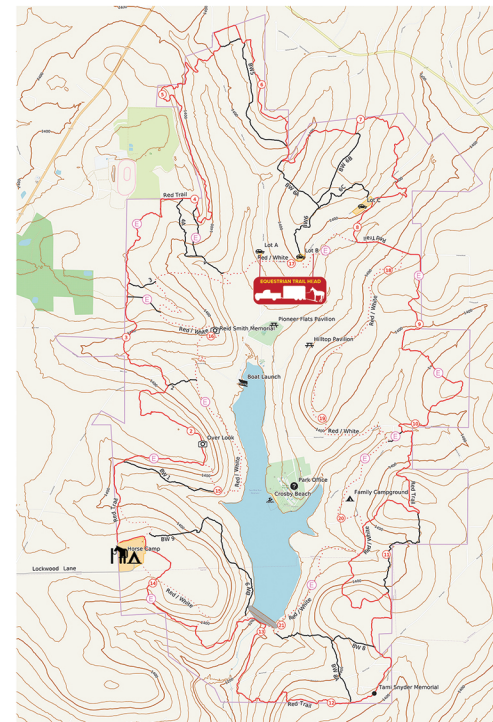


TWO MILE RUN COUNTY PARK

PAGE 8-9

Parking Updates: Day-Use parking is located at Lots A & B and at Lockwood.

Map Update: A new map has been released and is available online to download/print when you subscribe to Trail Rider's Path.



LOYALSOCK STATE FOREST

PAGE 26-27

Trail Updates: The Bridle Trail is (2) 26-mile loops, for a total of 52 miles of trails. Please note the areas highlighted in yellow are not marked as a bridle trail anymore.

